

Innovation, Challenges and Trends in Early Childhood Mental Health Consultation

Children's Mental Health Research
and Policy Conference
March 2012

A decorative graphic on the left side of the slide, consisting of two overlapping semi-circles. The top one is a bright yellow, and the bottom one is a slightly darker shade of yellow.

About the Consortium for Resilient Young Children

The CRYC is:

- A regional collaborative of organizations specializing in Early Childhood Mental Health or Early Childhood Education and Care
- Comprised of 7 non profit agencies and 1 school district
- Not a 501(c)3



Our Vision

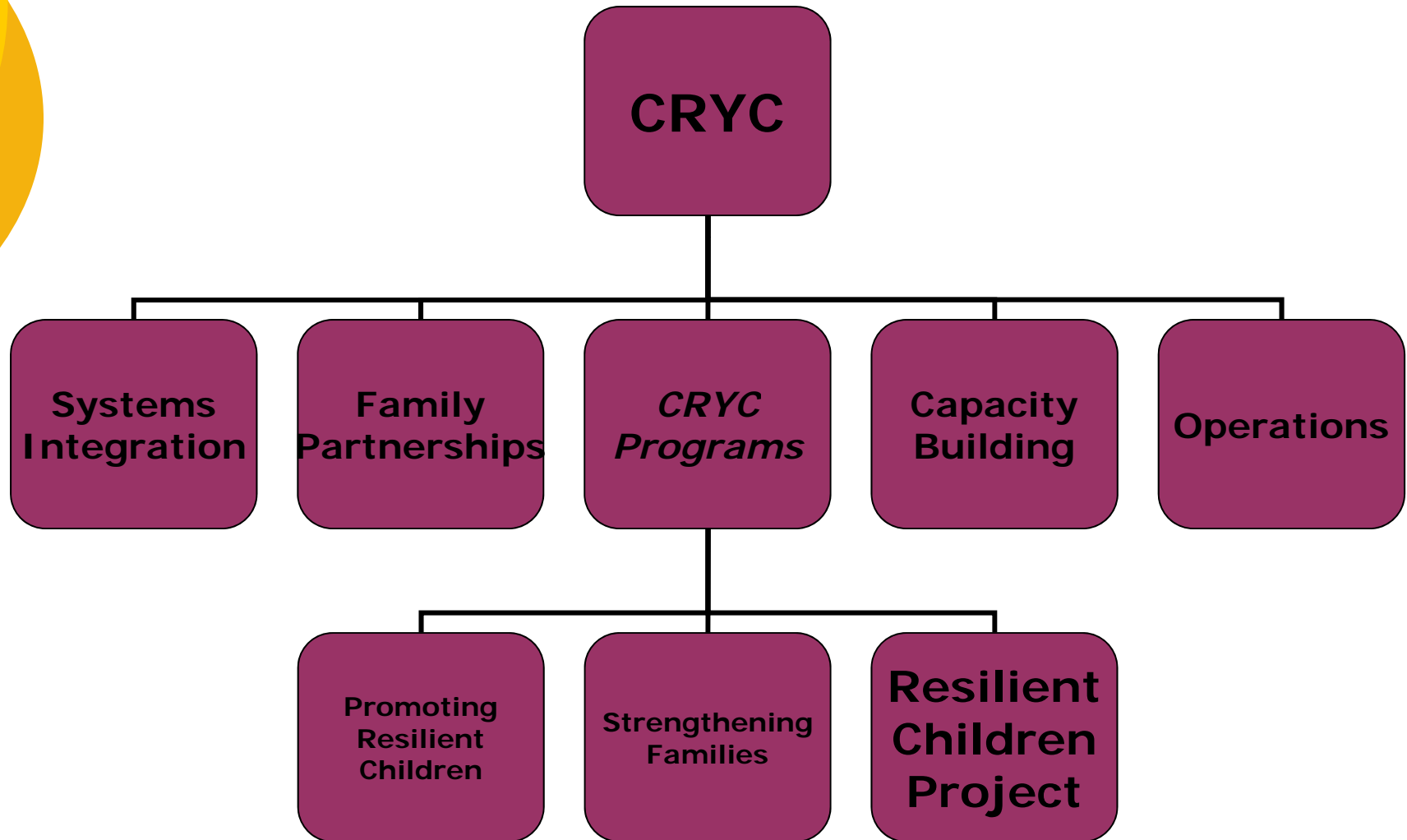
- All children are socially and emotionally competent and resilient.
- Parents and other caring adults support, build, and advocate for young children's social and emotional well being.
- Systems and communities serving young children and families are high quality, aligned and coordinated.



Our Mission

CRYC is a collaborative of mental health and early childhood agencies that promotes the social and emotional development and well being of young children, strengthens the capacity of all adults who care for them, and advocates for coordinated, aligned systems.

How we are structured...

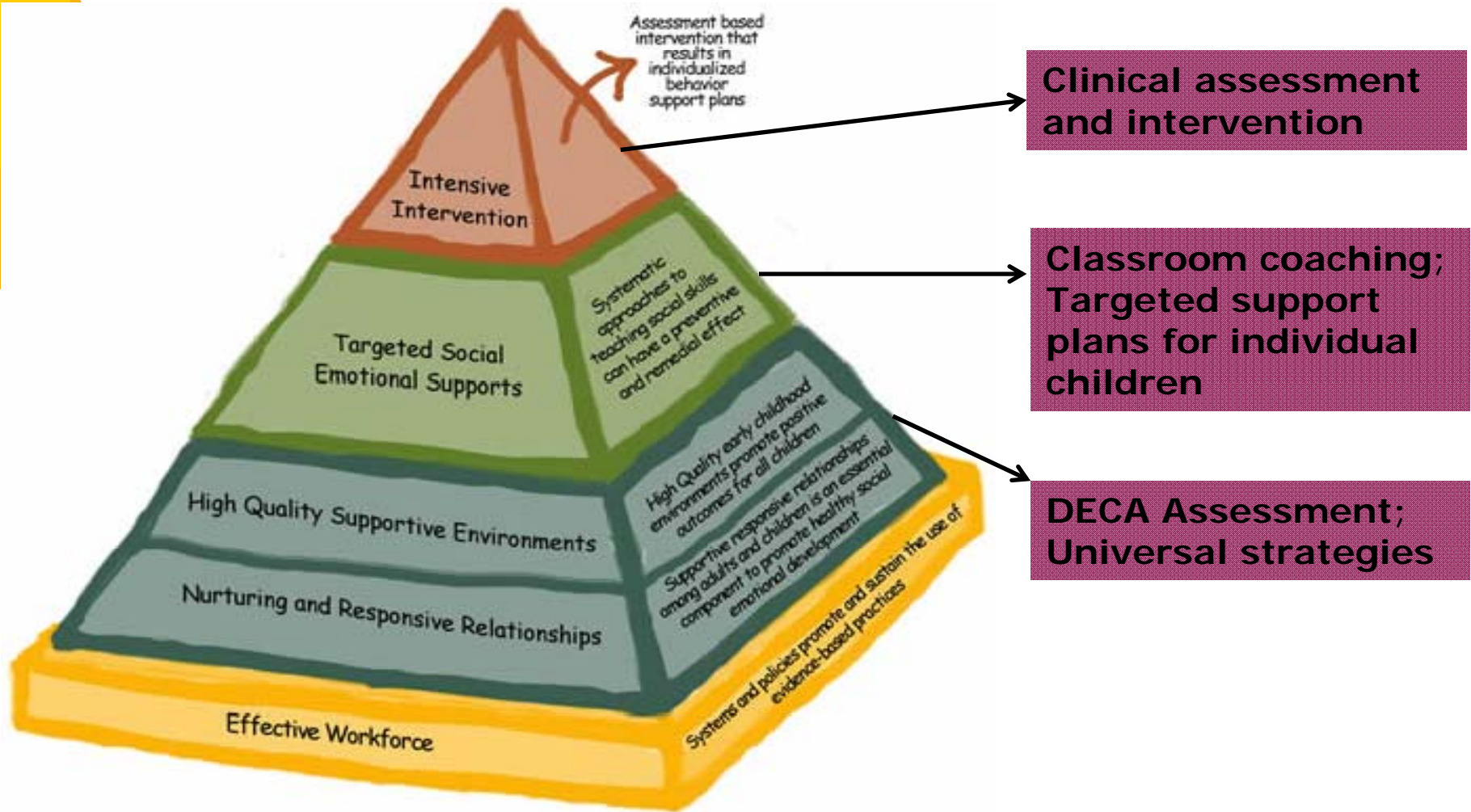




Resilient Children Project Goals

- To expand Early Childhood Mental Health Services in Cincinnati, OH and Covington and Newport, KY
- To increase level of evidence through rigorous evaluation
- To support the infrastructure of the Consortium for Resilient Young Children to engage the community and share best practices

CSEFEL/TACSEI Pyramid Model





Elements of Effective ECMHC

Element	RCP Implementation
Solid Program Infrastructure	Strong leadership Clear model: CSEFEL/TACSEI, key service elements Clear organizational structure Hiring and training of staff Supervision and support of staff Strategic partnerships Community outreach and engagement Clear communication Evaluation Financing

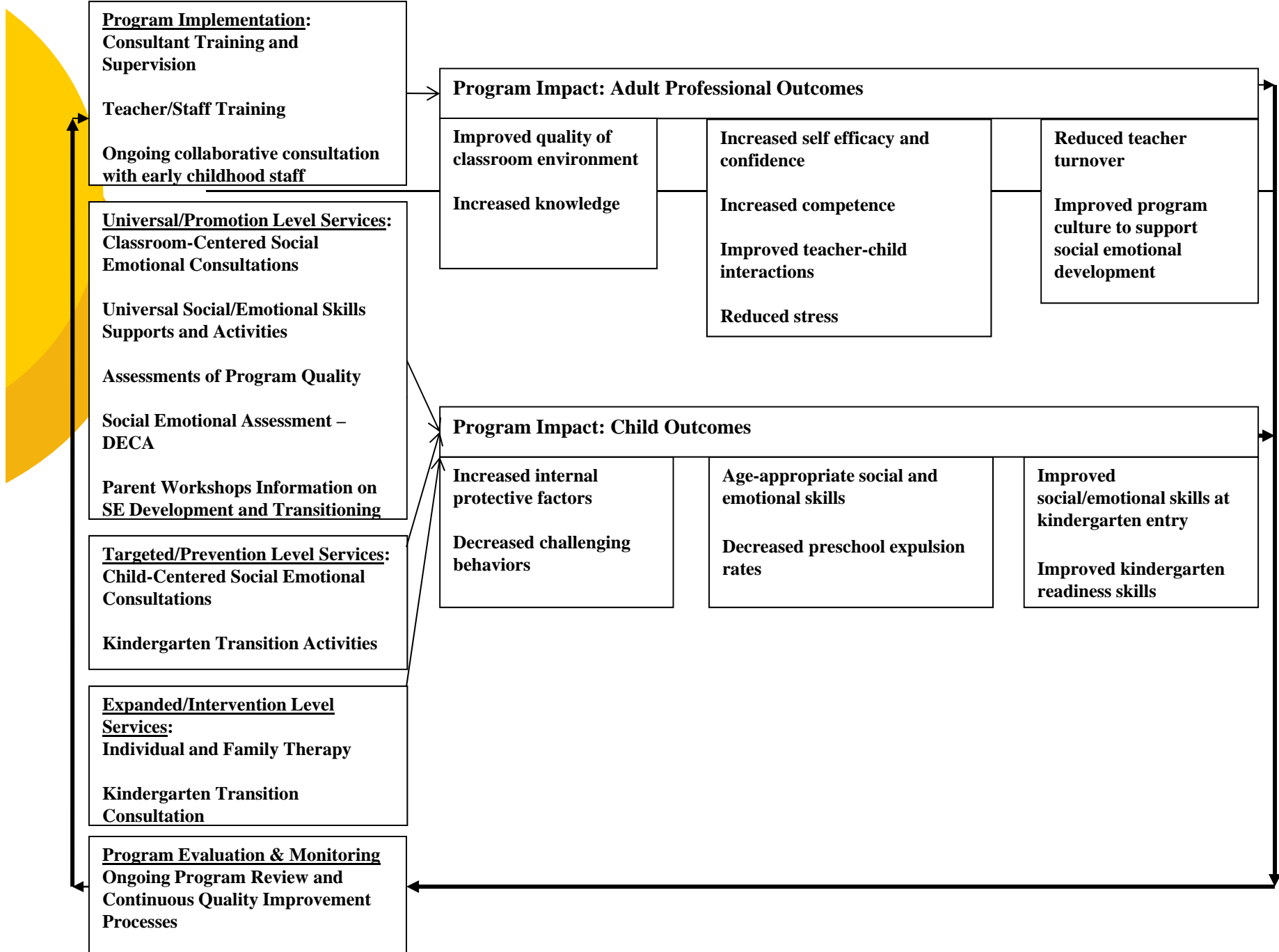
Duran, F., Hepburn, K., Irvine, M., Kaufmann, R., Anthony, B., Horen, N. & Perry, D. (2009) *What Works? A Study of Effective Early Childhood Mental Health Consultation Programs*. Washington, DC: Georgetown University Center for Child and Human Development.



Elements of Effective ECMHC

Element	RCP Implementation
Highly Qualified Mental Health Consultants	Education and content knowledge Skills Attributes and characteristics
High Quality Services	Information gathering Individualized service plan development Individualized service plan implementation support ECE provider/family education ECE provider/family emotional support Linkages to/provision of services beyond consultation

Duran, F., Hepburn, K., Irvine, M., Kaufmann, R., Anthony, B., Horen, N. & Perry, D. (2009) *What Works? A Study of Effective Early Childhood Mental Health Consultation Programs*. Washington, DC: Georgetown University Center for Child and Human Development.





the Consortium
for resilient young children

*“Each time a person stands up for an ideal,
or acts to improve the lot of others, he sends
forth a tiny ripple of hope...”*

-Robert F. Kennedy

www.resilientchildren.org
www.facebook.com/resilientchildren